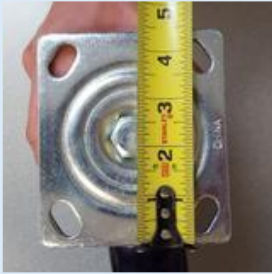


How to Measure a Caster

Top Plate Pattern



Measure the **top plate** by locating where the caster will be attached and the top plate that will be used. To do so, measure the outside to the outside of the top plate one way (length) and then repeat this on the perpendicular side (width).

Bolt Hole Pattern

To determine the **bolt hole pattern size**, measure in the same manner only this time measure the center of one hole to the center of the other (length), then repeat this to measure the width.



Measure Wheel Size



The **diameter** is measured with the wheel lying flat on its side, and with a measuring device measure from one side of the wheel to the opposite side. Make sure the measuring device passes over the center of the wheel. To measure the **width**, stand the wheel upright and measure from the outside of one side to the outside of the other.

Measure Overall Height

Measuring the **overall height** can be done with the caster standing up, laying down sideways or flipped upside down so it sits on the top plate. Measure from the top plate to the bottom of the wheel.

